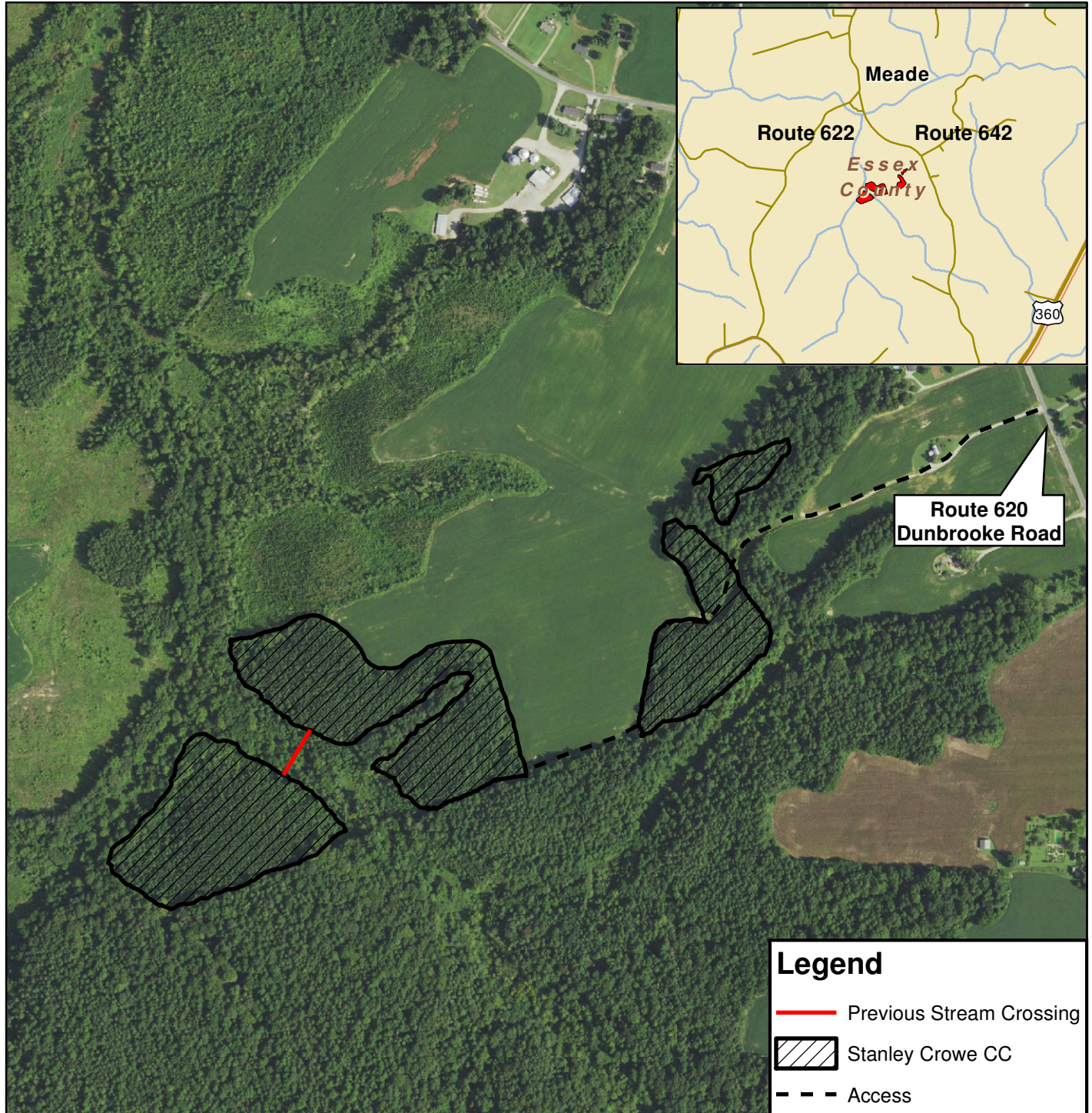
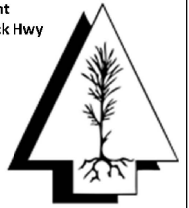




# Stanley Crowe Tract

Essex County, VA  
Sale Area: 28 +/- Acres (by GPS)

Forest Resources Management  
7840 Richmond-Tappahannock Hwy  
Aylett, Virginia 23009  
(804)769-3948 Office  
(804)769-0853 Fax  
(804)296-7239 Mobile  
[Carter@FRMVA.com](mailto:Carter@FRMVA.com)  
[FRMVA.com](http://FRMVA.com)  
*Consulting Foresters  
and  
Timberland Appraisers*



Harvest boundaries are marked with BLUE paint.  
No Harvest from within SMZ's

1 inch = 625 feet

CFU 3/7/2024