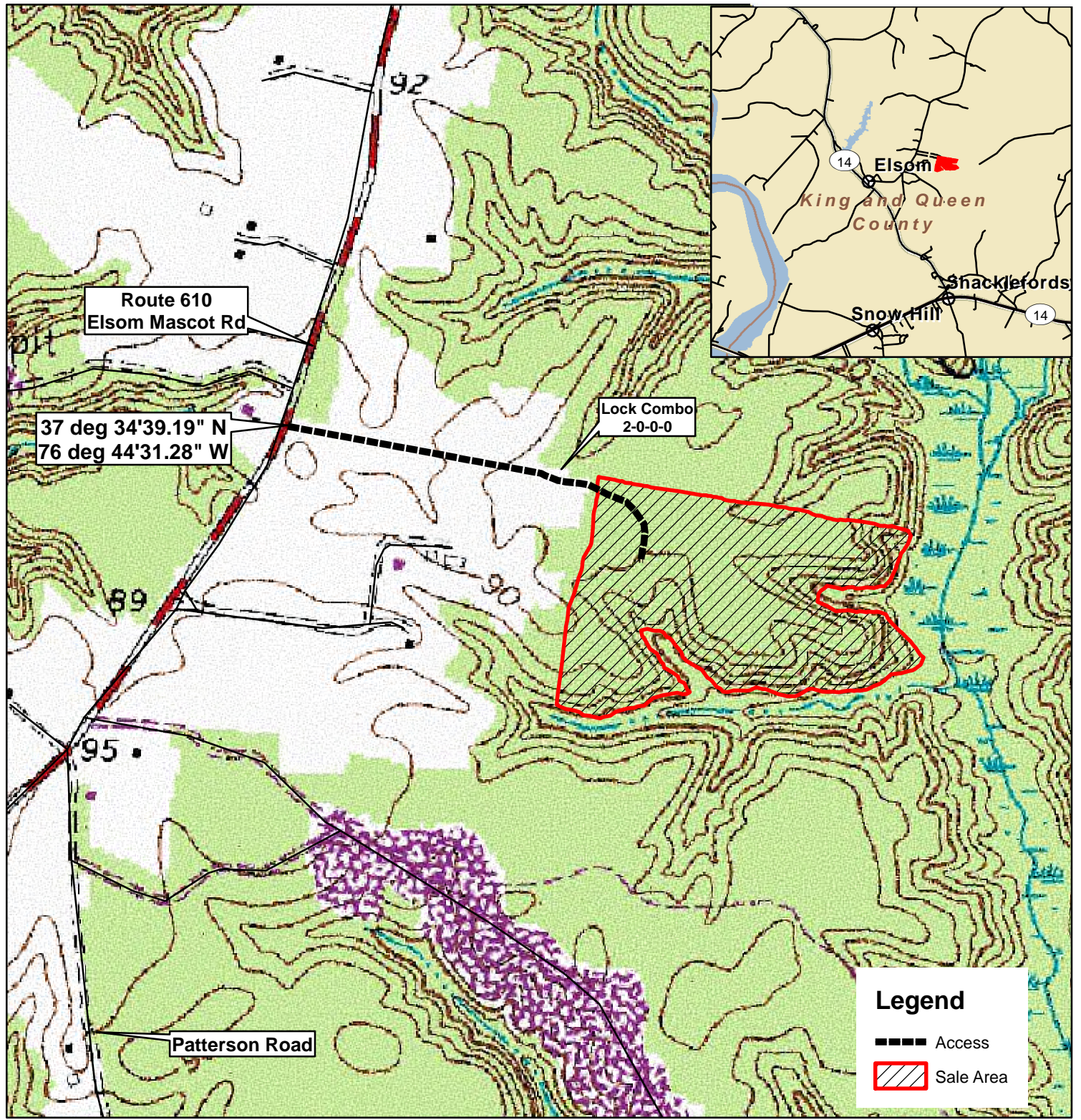


Burress Tract



King and Queen County, VA
Cruise Area: 31 +/- Acres (by GPS)

FRM, Inc.
7840 Richmond-Tappahannock Hwy.
Aylett, VA 23009
804.769.3948 Office
804.840.3362 Mobile
804.769.0853 Fax
brian@frmva.com

Consulting Foresters
and
Timberland Appraisers



Legend

-  Access
-  Sale Area

Harvest Boundaries Marked With Blue Paint
No Harvest From Within SMZ

Timber sale at 10 am Thurs., April 4, 2024
At the Forest Resources Mgmt. Office

1 inch = 660 feet

MBM 3/14/2024