

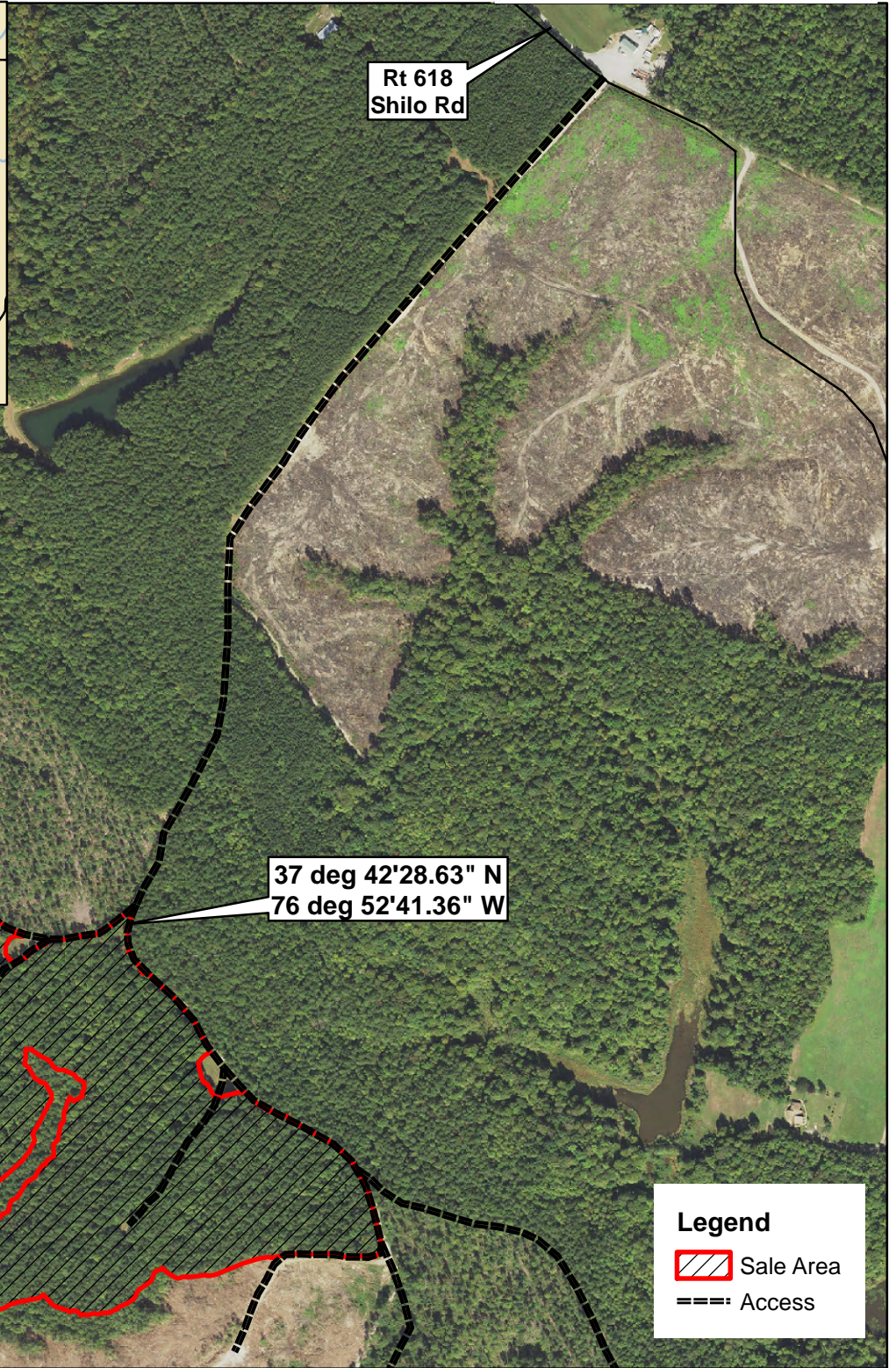
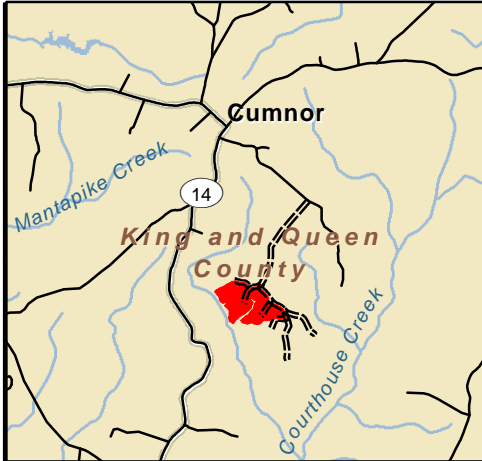
Shiloh Tract

King and Queen County, VA

Sale Area: 64 +/- Acres

FRM, Inc.
7840 Richmond-Tappahannock Hwy.
Aylett, VA 23009
804.769.3948 Office
804.840.3362 Mobile
804.769.0853 Fax
brian@frmva.com

Consulting Foresters
and
Timberland Appraisers



Rt 618
Shilo Rd

37 deg 42'28.63" N
76 deg 52'41.36" W

Legend

-  Sale Area
-  Access

Harvest Boundaries Marked With Blue Paint
No Harvest From Within SMZ

1 inch = 660 feet

Timber sale at 10 am Thurs., November 18, 2021
At the Forest Resources Mgmt. Office

MBM 10/20/2021