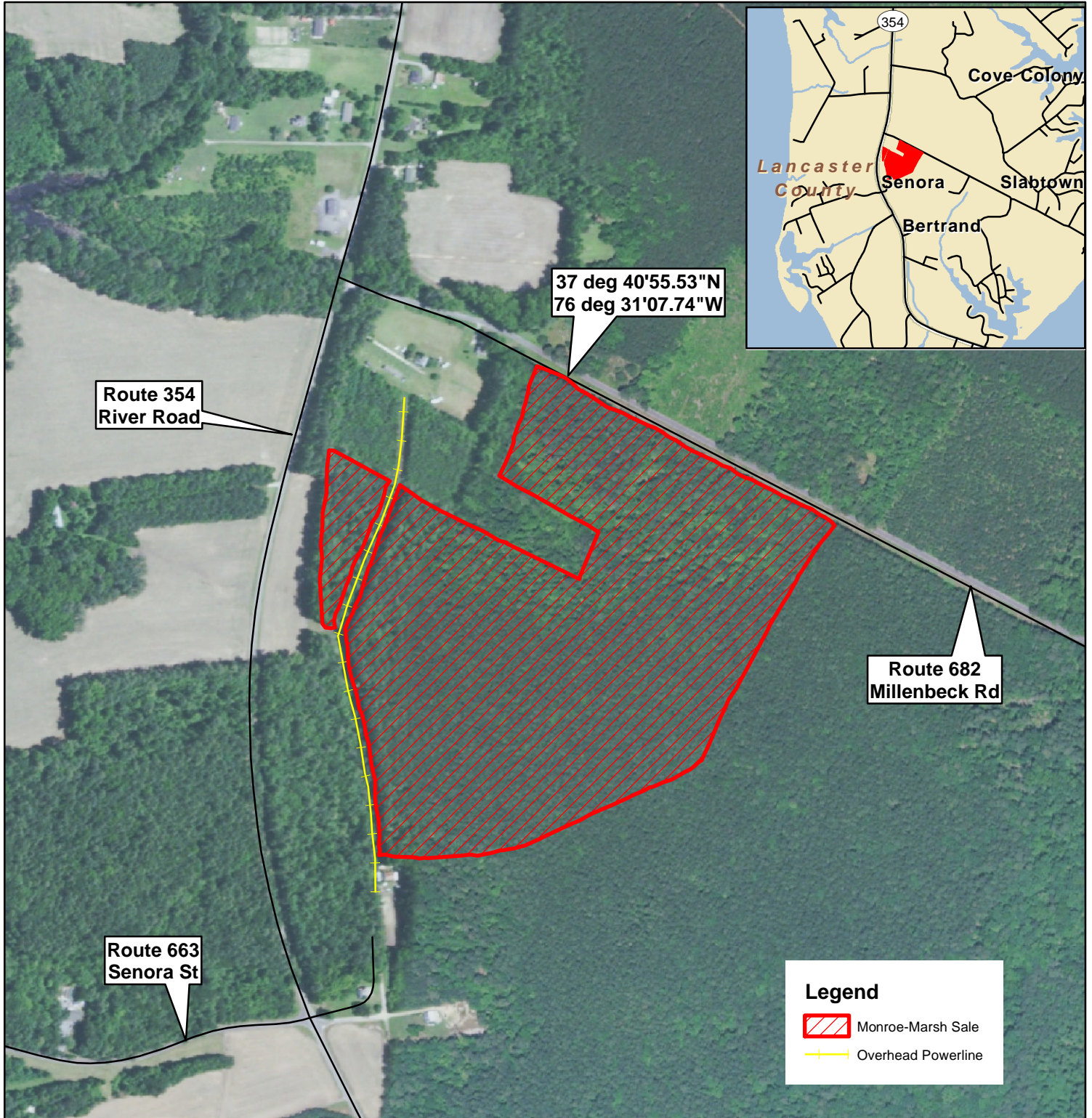


# Monroe-Marsh Tract Lancaster County, VA

Sale Area: 43 +/- acres

FRM, Inc.  
7840 Richmond-Tappahannock Hwy.  
Aylett, VA 23009  
804.769.3948 Office  
804.840.3362 Mobile  
804.769.0853 Fax  
brian@frmva.com

Consulting Foresters  
and  
Timberland Appraisers



Harvest Boundaries Marked With Blue Paint  
No Harvest From Within SMZ

Timber sale at 10 am Thurs., July 8, 2021  
At the Forest Resources Mgmt. Office

1 inch = 500 feet

MBM 6/9/2021