

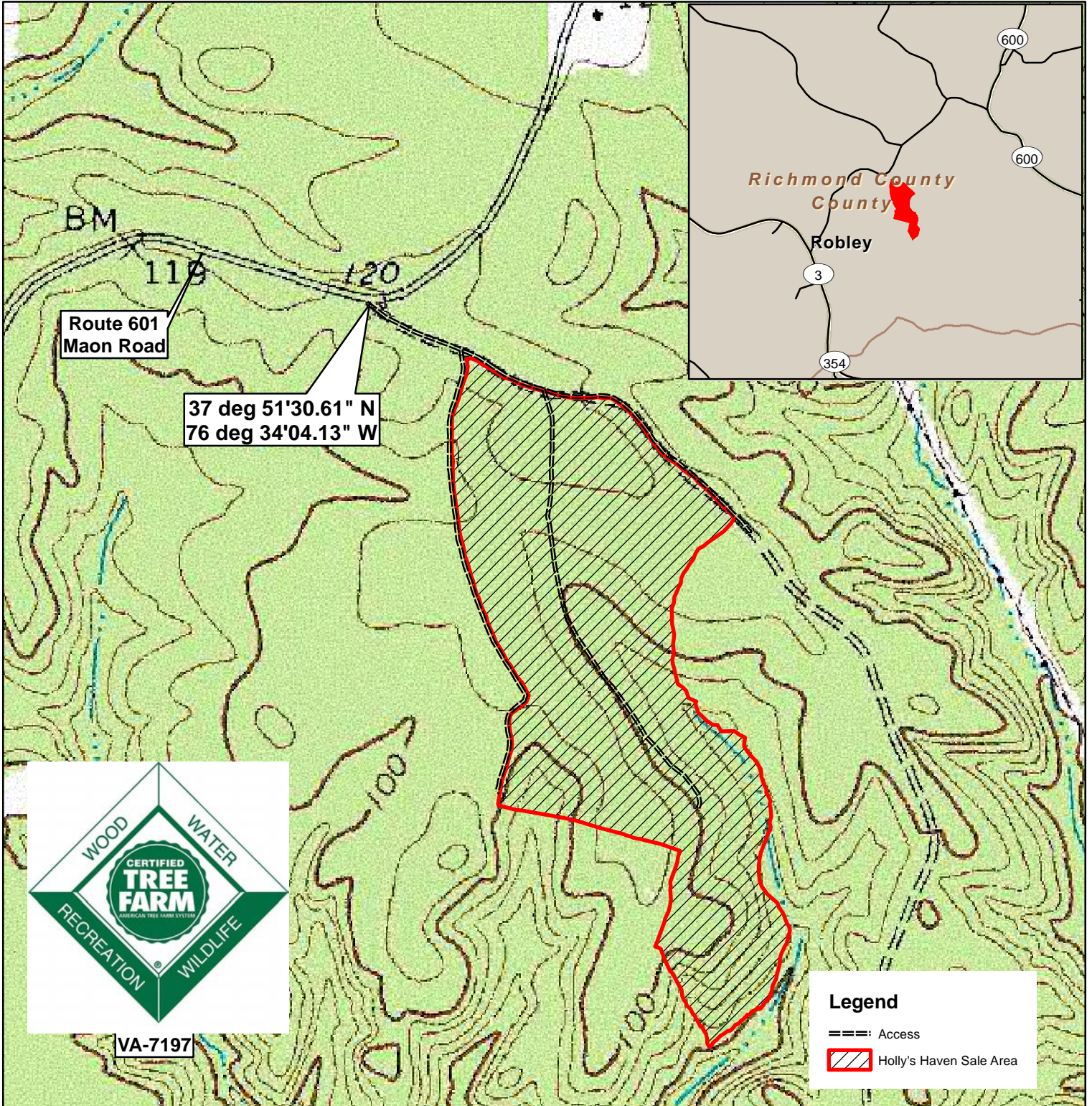
Holly's Haven Tract

Richmond County, VA

Sale Area: 60+/- Acres

F R M, Inc.
7840 Richmond-Tappahannock Hwy.
Aylett, VA 23009
804.769.3948 Office
804.840.3362 Mobile
804.769.0853 Fax
brian@frmva.com

Consulting Foresters
and
Timberland Appraisers



Harvest Boundaries Marked With Blue Paint & Blue Flagging Timber sale at 10 am Thurs., October 10, 2019
No Harvest From Within SMZ At the Forest Resources Mgmt. Office

1 inch = 660 feet

LOCK COMBO 2-0-0-0

MBM 9/12/2019