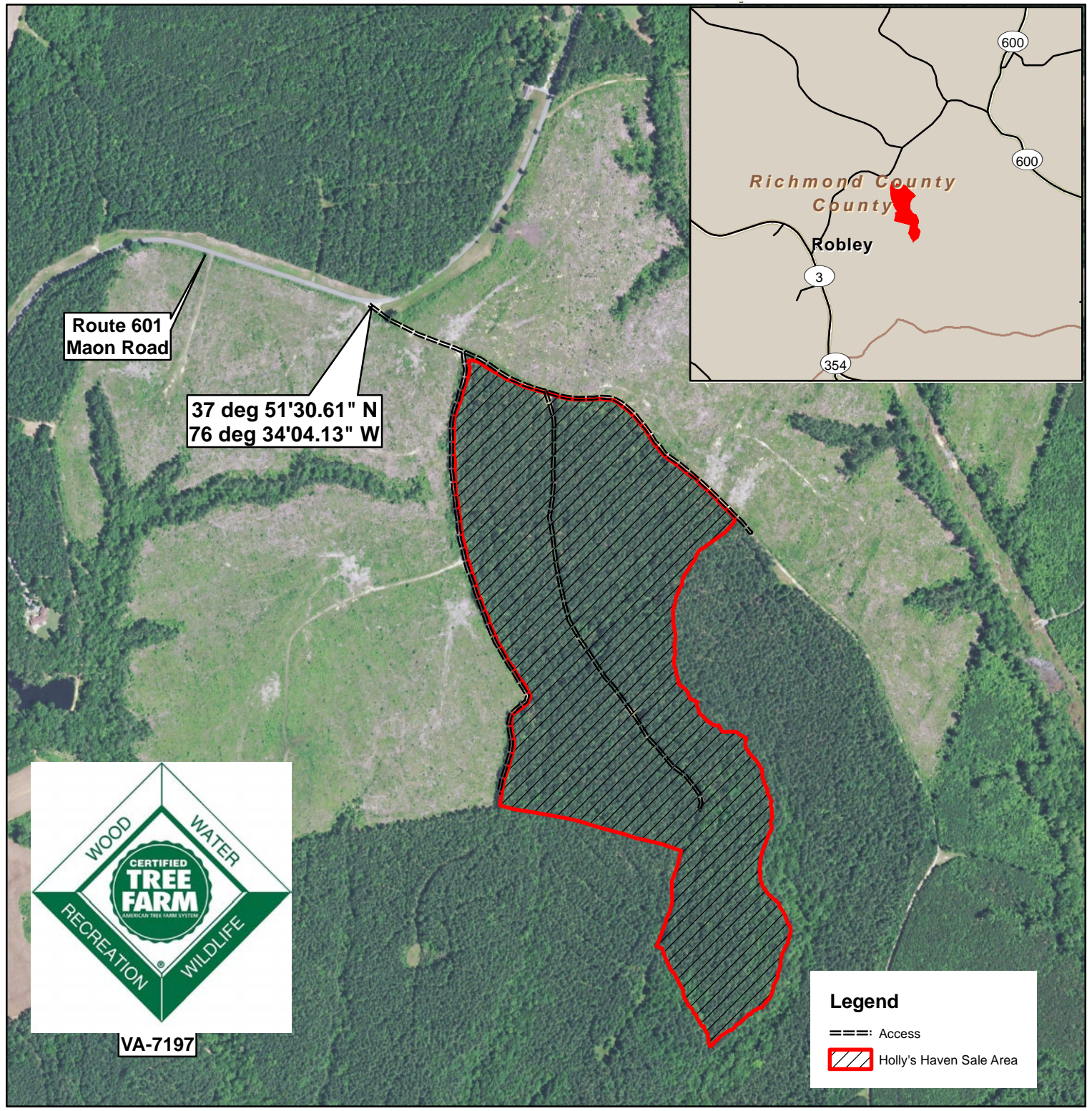


# Holly's Haven Tract

Richmond County, VA  
Sale Area: 60+/- Acres

F R M, Inc.  
7840 Richmond-Tappahannock Hwy.  
Aylett, VA 23009  
804.769.3948 Office  
804.840.3362 Mobile  
804.769.0853 Fax  
brian@frmva.com

Consulting Foresters  
and  
Timberland Appraisers



VA-7197

**Legend**

- ==: Access
- Holly's Haven Sale Area

Harvest Boundaries Marked With Blue Paint & Blue Flagging    Timber sale at 10 am Thurs., October 10, 2019  
No Harvest From Within SMZ    At the Forest Resources Mgmt. Office

1 inch = 660 feet

LOCK COMBO 2-0-0-0

MBM 9/12/2019