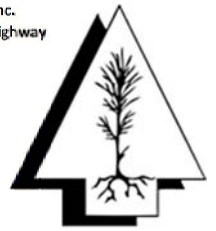


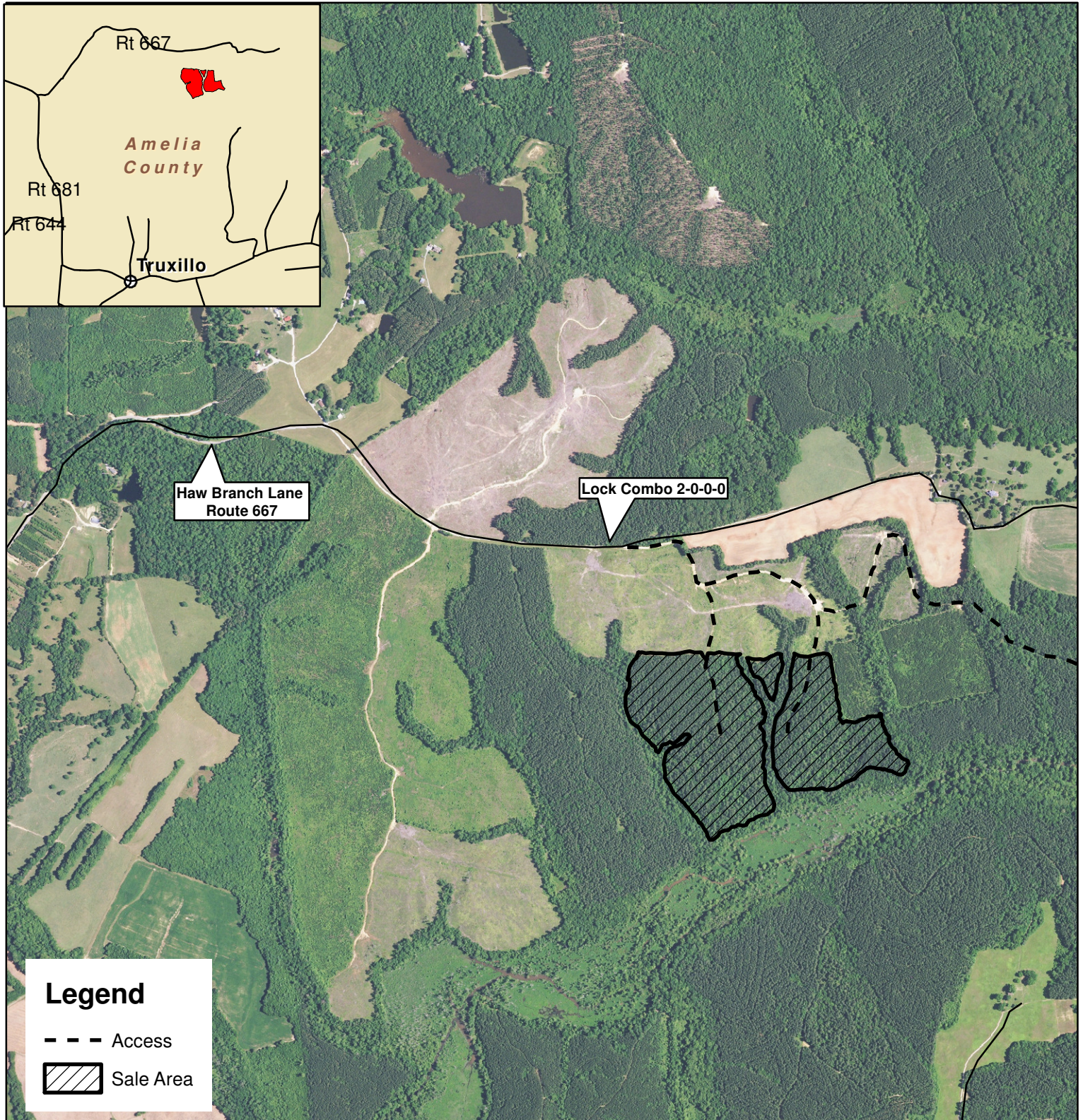
Flat Creek Tract

Amelia County, VA
Sale Area: 65 +/- Acres (by GPS)

Forest Resources Management, Inc.
7840 Richmond-Tappahannock Highway
Aylett, Virginia 23009
(804)769-3948 Office
(804)769-0853 Fax
(804)690-7011 Mobile
John@FRMVA.com
FRMVA.com



*Consulting Foresters
and
Timberland Appraisers*



Harvest Boundaries Marked With BLUE Paint
No Harvest From Within SMZ
1 inch = 1,320 feet

Timber sale at 10 am Thurs., November 14, 2019
At the Amelia County Courthouse
JRR 10/16/2019